

# Engineering a First-World Philippines



Copyright © June 2026  
by Megawide Construction Corporation

All rights reserved. No part of this Megawide Construction Company Profile may be produced, transmitted, or stored in an information retrieval system in any form or by any means, graphic, electronic, or mechanical including photocopying and recording without prior written permission from the publisher.

# We are Megawide Construction. We are engineering a **First-World Philippines**, that is our mission.

close to  
**200**  
PROJECTS

**290B**  
TOTAL  
PORTFOLIO  
VALUE

close to  
**2K**  
EMPLOYEES

**50B**  
ORDER BOOK

Figures as of February 2026



Megawide Construction Corporation stands at the forefront of nation-building in the Philippines, driven by a steadfast commitment to engineering excellence and innovation.

As a **PCAB AAAA contractor**, the highest contractor classification in the Philippines, Megawide delivers transformative infrastructure and property developments that shape the nation's future. This profile highlights our integrated capabilities, innovative methodologies, strategic partnerships, and dedicated people, the strengths that set us apart and drive our vision of a First-World Philippines.



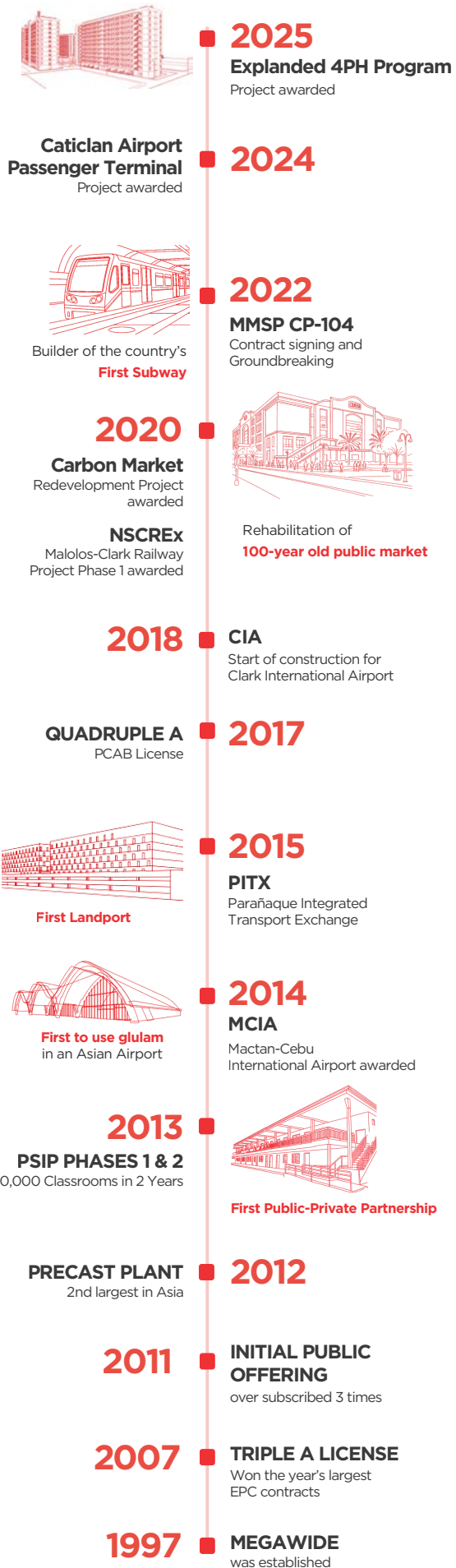
# Milestones of Innovation

## From Local Builder to Nation Builder

Since Megawide's establishment in 1997, we have evolved from a growing contractor into one of the country's leading engineering and infrastructure conglomerates.

Along the way, we have pioneered public-private partnerships, introduced advanced engineering and construction technologies, and delivered some of the nation's most significant infrastructure projects.

Each milestone marks a step forward in our mission to help build a more connected, modern, and progressive Philippines.



## Vision

We will be a First-World Philippines.

## Mission

We will be at the forefront of building a First-World Philippines through engineering excellence and innovation.

Our vision drives every project, innovation, and strategic decision we make. Through transformative infrastructure and innovative solutions, we help build a more progressive, connected, and prosperous nation, bringing a First-World Philippines closer to reality.



## Values



### Excellence

We strive to deliver the very best in all areas of work.



### Innovation

We embrace new methods that deliver better results.



### Teamwork

We bring together individuals to work towards a common goal.



### Malasakit

We believe that we are responsible for one another and that our actions impact others.



### Integrity

We value honesty, transparency, and fairness.



### Community

We understand the aspirations of our partner communities and work hand-in-hand to achieve them.

# Our Integrated EPC Approach

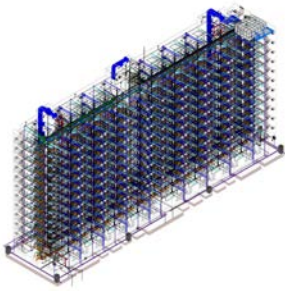
Our strength lies in its fully integrated Engineering, Procurement, and Construction (EPC) approach, ensuring seamless execution from design to handover. This enables greater efficiency, quality, and value delivery across every project.



The EPC model enables us to maintain end-to-end control of project delivery. Our world-class design, strategic sourcing, and construction excellence work together to build infrastructure that meets First-World standards.

# Engineering

Precision, Innovation, and Collaboration



Our engineering expertise delivers efficient design and First-World technology that drive construction with innovation and excellence.

## Design Efficiency

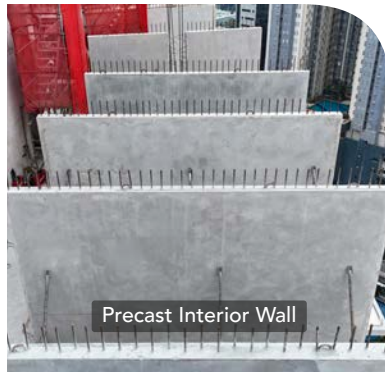
We engineer buildings, infrastructure and property developments in collaboration with seasoned professionals and industry leaders, generating cost-effective and construction-friendly design.

## First World Technology

We embrace First-World technologies and best practices across the entire project lifecycle, from design collaboration through BIM and digital platforms to modular and sustainable construction methodologies.



Precast Shear Wall



Precast Interior Wall



Precast Exterior Wall

## Research and Development

We prioritize research and development, focusing on elevating design and methodology standards that drive cost efficiency, improve quality, and enable faster construction completion.



Load testing for 150mm thick composite concrete slab



Grouted coupler



Bond test for Glass Fiber Reinforce Polymer (GFRP) reinforcements

# Procurement

## Strategic Sourcing for Optimal Value

Our procurement strategy leverages a strong global supply network and international partnerships to ensure efficient and cost-effective sourcing of high-quality resources and First-World products that elevate project standards and enable world-class execution.



**Strategic Sourcing:** We tap a trusted global network to secure materials and services that meet complex project requirements with flexibility and reliability.

**Vertical Integration:** In-house capabilities such as precast and batching plants and equipment warehouses give us greater control over quality, efficiency, and supply chain execution.

**International and Local Supplier Partnerships:** We work with international and local partners to optimize delivery while supporting competitive and sustainable local industry growth.



# Construction

## Excellence in Execution and Project Delivery

Our construction phase is characterized by meticulous planning, expert project management, and a vast wealth of experience, ensuring projects are implemented with excellence from initiation to close-out.

**Project Management:** We ensure disciplined and efficient project delivery through comprehensive planning, performance monitoring, and post-project evaluation. By implementing detailed execution plans, conducting regular reviews to prevent delays and cost overruns, and continuously refining processes, we drive efficiency, accountability, and sustained improvement across all projects.

**Vast Experience:** We boast an extensive portfolio of successful projects, including large-scale malls, condominiums, entertainment cities, airports, and landports, demonstrating our capability to handle diverse and complex developments.

### **Mactan Cebu-International Airport (MCIA)**

A globally recognized aviation landmark featuring Asia's first airport terminal with a glulam timber roof, showcasing excellence in delivering innovative, world-class infrastructure.

# Our Impact

## A Portfolio of First-World Developments

Megawide's extensive project portfolio reflects its profound impact on the Philippine landscape, delivering iconic structures and critical infrastructure that contribute to national progress.

### **Clark International Airport (CIA)**

A transformative aviation project that elevated the airport into a world-class gateway, featuring modern facilities and design upgrades that enhance passenger experience and operational efficiency.

# Flagship Projects



## PPP for School Infrastructure Project Phases 1 and 2

Successfully delivered close to 10,000 classrooms across 3,000+ sites in 27 provinces, addressing critical educational infrastructure needs.



## Parañaque Integrated Terminal Exchange (PITX)

The country's first landport, designed to modernize land travel for over 170,000 daily passengers.



## Aglipay Sewage Treatment Plant (STP)

A vital environmental infrastructure project that improves wastewater management, enhances public health, and contributes to cleaner waterways, directly benefiting surrounding communities.



## Megawide Head Office

One of the first LEED-certified buildings in the Philippines, reflecting Megawide's commitment to sustainable design, energy efficiency, and environmentally responsible construction practices.

# Diverse Project Segments

Megawide's expertise spans a wide range of project types:

## MY ENSO LOFTS

Client: PHI World Developers, Inc  
Location: Timog Avenue, cor. Sgt. Esguerra,  
District 4, Quezon City

Status: Ongoing  
CFA: 80,292 sqm.  
No. of Units: 1,204 units



# Residential

## Vertical



### MODAN LOFTS ORTIGAS HILLS

Client: PHI World Developers, Inc  
Location: Ortigas Ave Ext, Taytay, Rizal

Status: Ongoing  
CFA: 67,853 sqm.  
No of Units: 1,062 units



### UPTOWN MODERN

Client: Megaworld Corporation  
Location: Uptown Bonifacio, Taguig

Status: Ongoing  
CFA: 7132,022 sqm  
No. of Units: 1,053 units



### ONE PORTWOOD RESIDENCES

Client: Megaworld Corporation  
Location: Newport Boulevard, Newport City, Pasay City

Status: Ongoing  
CFA: 73,561 sqm  
No. of Units: 491 units



### URBAN DECA ORTIGAS

Client: 8990 Holdings, Inc.  
Location: Ortigas Extension, Brgy. Sta. Lucia, Pasig City

Status: Ongoing  
CFA: 818,110 sqm.  
No. of Units: 11,332 units



### URBAN DECA CUBAO

Client: 8990 Holdings, Inc.  
Location: EDSA Cubao, Quezon City

Status: Completed  
CFA: 115,000 sqm.  
No. of Units: 4,961 units



### GENTRY MANOR

Client: Megaworld Corporation  
Location: Southeast Beach District, West Side City, Parañaque City

Status: Completed  
CFA: 119,326 sqm  
No. of Units: 1,267 units



### UNIVERSITY TOWER 5

Client: Prince Jun Development Corp.  
Location: 1310 Espana Blvd corner Galicia St., Sampaloc, Manila

Status: Completed  
CFA: 80,292 sqm  
No. of Units: 1,204 units

# Residential

## Horizontal



### NORTHSCAPES SAN JOSE DEL MONTE

Client: PH1 World Developers, Inc.  
Location: Brgy. Kaypian, San Jose Del Monte, Bulacan

Status: Completed  
No. of Units: 329 units  
CFA: 23,132 sqm



### SOUTHSCAPES TRECE MARTIRES

Client: PH1 World Developers, Inc.  
Location: Brgy. Lapidario, Trece Martires City Cavite

Status: Ongoing  
No. of Units: 394 units  
CFA: 21,667 sqm

## Socialized Housing



### AVESTA RESIDENCES

Client: PH1 World Developers, Inc.  
Location: Brgy. Malagasang, Imus, Cavite

Status: Ongoing  
No. of Units: 1,540 units (220 units per Tower)  
CFA: 57,423 sqm



### JENARA RESIDENCES

Client: Megawide Dreamrise Residences Inc.  
Location: Salitran, Dasmariñas City, Cavite

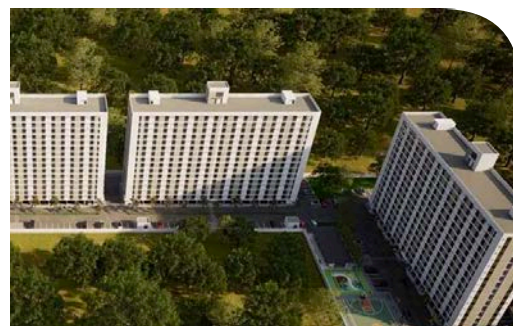
Status: Ongoing  
No. of Units: 4,590 units  
CFA: 153,793 sqm



### JAB RESIDENCES

Client: Megawide Dreamrise Residences Inc.  
Location: Barangay Paliparan, Dasmariñas City, Cavite

Status: Ongoing  
No. of Units: 2,924 units  
CFA: 99,033 sqm



### STREVI RESIDENCES

Client: PH1 World Developers, Inc.  
Location: Barangay Salinas 1, Bacoor, Cavite

Status: Ongoing  
No. of Units: 2,040 units  
CFA: 92,967 sqm

# Commercial & Industrial

Mixed Use

## DD MERIDIAN TOWER

Client: DoubleDragon REIT  
Location: Pasay City

Status: Completed  
CFA: 38,772 sqm.



# Commercial & Industrial

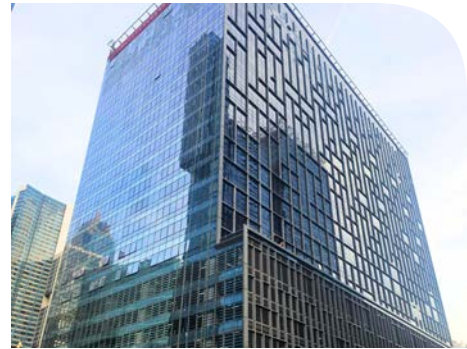
## Mixed Use



### ARTHALAND CENTURY PACIFIC TOWER

Client: Arthaland Corp.  
Location: 4th St. cor. 31st St., BGC,  
Taguig City

Status: Completed  
CFA: 15,261 sqm



### INTERNATIONAL FINANCE CENTER

Client: Megaworld Corporation  
Location: 11th Avenue Corner 36th St.  
Uptown Bonifacio, Taguig City

Status: Completed  
CFA: 114,777 sqm



### JAZZ RESIDENCES 1-4

Client: SMDC  
Location: Jupiter St., cor. N. Garcia  
Brgy. Bel-Air, Makati City

Status: Completed  
CFA: 286,769 sqm.



### GRASS TOWERS 1-4

Client: SMDC  
Location: Nueva Vizcaya St. SM North Edsa  
Complex, Quezon City

Status: Completed  
CFA: 343,888 sqm.



### THE CURVE

Client: IRMO Inc.  
Location: 32nd Street cor. 3rd Avenue,  
BGC, Taguig City

Status: Completed  
CFA: 47,008 sqm

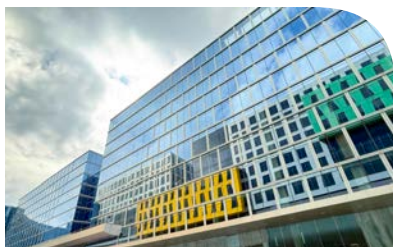
# Commercial & Industrial Hotels



**HOTEL 101 - BRIDGETOWNE LIBIS**

Client: DoubleDragon-Hotels of Asia, Inc.  
Location: Bridgetowne, Libis, Quezon City

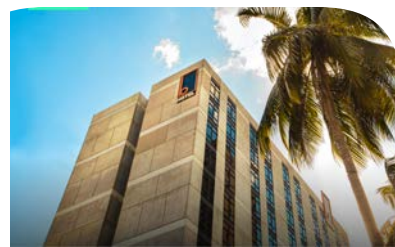
Status: Ongoing  
CFA: 33,582 sqm.



**ASCOTT HOTEL AT DD MERIDIAN PARK MANILA**

Client: DD Meridian Park Development Corp  
Location: DD Meridian Park, Bay Area corner Pasay City

Status: Completed  
CFA: 49,365 sqm.



**B HOTEL QUEZON CITY**

Client: Northbelle Properties Inc.  
Location: Quezon City

Status: Completed  
CFA: 12,391 sqm



**HOTEL KIMBERLY TAGAYTAY**

Client: Total Investment and Management Corp.  
Location: Tagaytay City

Status: Completed  
GFA: 6,000 sqm



**THE BELLEVUE MANILA**

Client: RPJ Development Inc.  
Location: Alabang, Muntinlupa City

Status: Completed  
GFA: 35,000 sqm

## Hotels & Integrated Resort

### WESTSIDE RESORT

Client: Entertainment City Resort Group.  
Location: Lot 5 & Lot 6, Jose W. Diokno Blvd., Brgy. Tambo, Parañaque City

Status: Ongoing  
CFA: 206,626 sqm.



**CITY OF DREAMS MANILA**

Client: Belle Corporation  
Location: Entertainment City, Roxas Blvd, Parañaque City

Status: Completed  
CFA: 157,440.00 sqm.



# Commercial & Industrial

## Industrial & Warehouse



### LANDERS ASEANA

Client: Southeast Retail, Inc.  
Location: Diokno Boulevard, Aseana, Parañaque City

Status: Completed  
CFA: 18,711 sqm.

### LANDERS ALABANG

Client: Southeast Retail, Inc.  
Location: Daang Hari, Alabang, Muntinlupa

Status: Completed  
CFA: 8,800 sqm.

### LANDERS OTIS

Client: Southeast Retail, Inc.  
Location: Otis, Paco, Manila

Status: Completed  
CFA: 8,360 sqm.

### LANDERS BALINTAWAK

Client: Southeast Retail, Inc.  
Location: Apolonio Samson, Quezon City

Status: Completed  
CFA: 8,360 sqm.

### LANDERS ARCOVIA

Client: Southeast Retail, Inc.  
Location: C5, Arcovia, Pasig City

Status: Completed  
CFA: 17,000 sqm.

## Warehouse & Cold Storage



### ORCA TAGUIG COLD STORAGE

Client: ISOC Holdings  
Location: Taguig City

Status: Completed  
GFA: 22,600 sqm



### JOLLIBEE ZEN AND DELTA FOOD COMMISSARY

Client: Zenith Foods Corporation  
Location: Canlubang, Laguna

Status: Completed  
GFA: 50,023 sqm

# Infrastructure

## Rail & Road

### NORTH SOUTH COMMUTER RAILWAY EXTENSION PROJECT (NSCREX)

Client: DOTR  
Scope of Work: Construction of 17 kilometers of elevated rail viaduct, seven bridges, and two railway stations

Contractor: Hyundai Engineering and Construction Co. Ltd., Megawide, and Dong-ah Geological Engineering Company Ltd. (HMDJV)

Status: Ongoing  
Area: 17 km



# Infrastructure

## Rail & Road

### METRO MANILA SUBWAY PROJECT (MMSP CP104)

Client:	DOTR
Scope of Work:	Construction includes two underground stations in Ortigas Station and Shaw Station and the tunnels connecting these two locations
Contractor:	Tokyu-Tobishima-Megawide Joint Venture (TTMJV)
Status:	Ongoing
Area:	3.40 km



# Infrastructure

## Transport



**PARAÑAQUE INTEGRATED TERMINAL EXCHANGE (PITX)**

Client: DOTR  
Scope of Work: Build-Operate-Transfer

Contractor: Megawide Construction  
Status: Completed



**MACTAN-CEBU INTERNATIONAL AIRPORT (MCIA)**

Client: DOTR  
Scope of Work: Build-Operate-Transfer

Contractor: GMR Megawide Cebu Airport Corporation Inc. (GMCAC)  
Status: Completed



**CLARK INTERNATIONAL AIRPORT (CIA)**

Client: The Bases Conversion and Development Authority (BCDA)  
Scope of Work: Build-Transfer

Contractor: Megawide-GMR Construction Joint Venture, Inc. (MGCJV)  
Status: Completed



**CATICLAN AIRPORT PASSENGER TERMINAL**

Client: San Miguel Corporation (SMC) Infrastructure  
Scope of Work: Design-Build

Contractor: Megawide Construction  
Status: Ongoing  
CFA: 36,470 sqm

## Power



**105MWp BINALONAN SOLAR POWER PLANT**

Client: MCC-Citcore Construction, Inc.  
Location: Brgy Camangaan, Binalonan, Pangasinan  
Status: Ongoing  
Area:



**125MWp SOLAR STA BARBARA**

Client: MCC-Citcore Construction, Inc.  
Location: Sta. Barbara, Pangasinan  
Status: Ongoing  
Area: 125 ha



**72MWp SOLAR LUNTAL**

Client: MCC-Citcore Construction, Inc.  
Location: Brgy. Luntal, Tuy, Batangas  
Status: Ongoing  
Area:



**177MWp SOLAR BOLBOK 1 & 2**

Client: MCC-Citcore Construction, Inc.  
Location: Brgy. Bolbok Tuy, Batangas  
Status: Ongoing  
Area: 354 ha

# Infrastructure

## Social



### EXPANDED 4PH PROGRAM

Client: Megawide Dreamrise Residences Inc.  
Location: Barangay Paliparan, Dasmariñas City, Cavite

Status: Ongoing  
No. of Projects: 4 projects



### PPP FOR SCHOOL INFRASTRUCTURE PROJECT PHASES 1 AND 2

Client: Department of Education  
Scope of Work: Phase 1: Design, construction and financing  
Phase 2: Design and construction

Contractor: Citicore Megawide Consortium, Inc.  
Status: Completed  
GFA: Phase 1 505,316 sqm | Phase 2 245,748 sqm

### CARBON MARKET REDEVELOPMENT PROJECT

Client: Cebu2World Development, Inc.  
Scope of Work: Design, construction, financing, operations and maintenance for 50 years

Contractor: Megawide Construction  
Status: Ongoing  
CFA: 37,680 sqm



# Our Commitment to Quality and Sustainability

## First-World Standards and Certifications

Megawide is committed to aligning its standards with global industry requirements in quality assurance and safety.



### Philippine Contractors Accreditation Board (PCAB) AAAA

The highest level of PCAB certification, allowing us to bid on both private and public large-ticket projects.



### PhilGEPS Platinum Membership

Reflects our compliance with government procurement standards, enabling participation in public bidding and reinforcing our commitment to transparency and credibility.



#### ISO 9001:2015

##### Quality Management System

Provides a framework for improving quality management, enhancing customer satisfaction, and ensuring consistent processes.



#### ISO 14001:2015

##### Environmental Management System

Underscores our commitment to environmental sustainability and responsible operations.



#### ISO 45001:2018

##### Occupational Health and Safety Management System

Demonstrates our focus on fostering a healthy and safe workplace for all stakeholders.

# Innovation in Construction

Megawide advances sustainable construction through mechanization, prefabrication, and efficient construction methods that reduce on-site activity, minimize material waste, and improve resource efficiency, resulting in faster, cleaner, and more environmentally responsible project delivery.



**Megawide Precast Facility**  
Brgy. San Juan, Taytay, Rizal

About 10 hectares (100,000 sq.m)  
Production Capacity: 168,000 m<sup>3</sup> /  
year (14,000 m<sup>3</sup> / month)

# Precast and Construction Solutions

## One-stop First-World Construction Solutions

Precast & Construction Solutions (PCS), is a leading provider of integrated, First-World construction solutions in the Philippines and a strategic partner of Megawide Construction (MCC).

MCC is supported by PCS in delivering innovative solutions that strengthen infrastructure development in the country, leveraging one of Asia's largest precast capacities to ensure efficient, high-quality project execution.



### PRECAST

Largest and most advanced precast facility in the Philippines and the second largest in Southeast Asia



### FORMWORKS

- Provides state-of-the-art climbing and forming technology
- Supplies and installs temporary facilities such as warehouses, offices and barracks
- Utilizes mature safety concepts that ensure time and cost efficiency, safety and high-quality delivery



### READY MIXED CONCRETE

- Comes with fully automated mobile and stationary batching plants
- Provides higher-quality concrete that meets environment-friendly standards
- Offers mobile batching plants in key areas to ensure standardization and lessen delays



### CONSTRUCTION EQUIPMENT, LOGISTICS & SERVICES

- Provides extensive fleet of advanced operations and logistics equipment like earthmoving, hauling, and concrete delivery equipment
- Offers groundworks services for site clearing demolition and excavation works, land development and dewatering works

# Our People

## Building a First-World Workforce

Megawide Construction develops high-performing teams, strengthening leadership capabilities and cultivating a culture of accountability, excellence, and continuous learning.



# Our People

## Management



**EDGAR SAAVEDRA**  
Chairman of the Board of Directors,  
Chief Executive Officer and President

Edgar Saavedra is a licensed civil engineer with nearly 30 years of experience in construction and infrastructure. As Founder, Chairman, and President of the Megawide Construction Corporation, he leads Megawide Construction with deep technical expertise and bold vision, driving its mission of engineering a First-World Philippines.

He also leads Citicore, a separate but affiliated company focused on renewable energy, where he serves as Chairman of Citicore Energy REIT and Citicore Power.

Mr. Saavedra holds a Civil Engineering degree from De La Salle University and completed specialized training in Foundation Formworks in Germany.



**FREDERICK TAN**  
Chief Operating Officer



**MARTIN MIGUEL FLORES**  
Head of Procurement



**REYNALDO RODRIN**  
Group Head for Operations



**JULES NORMAN RONQUILLO**  
Group Head for Operations



**GRANT LEE FELLOWES**  
Project Director,  
North South Commuter Railway  
Project



**BENA KRISTIE BALANDRA**  
Deputy Project Manager,  
Metro Manila Subway Project

# Our People

## Management

At Megawide, our people are our greatest asset and the driving force behind our success. We believe in empowering innovators through continuous learning and development, fostering a culture of excellence, integrity, and teamwork.



**KEITH ANTHONY CALIMAG**  
Project Director



**MARY ANN MARCOS**  
Deputy Finance Head



**MELVINO FAUSTINO**  
Engineering Head



**MARK ANTHONY GOLES**  
Commercial & Contracts Head



**JENEFER ALBA**  
HR Operations Head



**PAULA LAO**  
HR Learning &  
Organizational Devt Head



**KRISTINE JOYCE LAGROSA**  
Communications &  
Branding Head



**GARRET WILKENSON SIA**  
Officer-in-Charge,  
Program Management Office

# Leadership

# Our People

## Leadership Development

We equip our people with the skills and expertise needed to deliver world-class projects through structured leadership and technical development programs.



## Leadership in Action

We empower our leaders to make tough decisions, handle difficult conversations and learn through challenges as they drive progress in their projects and assignments.



## Recognition and Rewards

We recognize individuals who demonstrate excellence, embody our values, and contribute to organizational success.



# Our People

## Recognition and Rewards



### Pagkilala

Recognizes employees who complete key learning and development programs and who represent the organization in industry - related events



### Parangal

Honors employees who consistently exemplify Megawide's core values and leadership behaviors.

## Culture of Accountability and Collaboration

Our culture drives ownership, teamwork, and excellence across all projects.



### Ownership Mindset

Employees are empowered to take responsibility, follow through on commitments, and deliver quality results.



### Collaborative Execution

Cross-functional teams work together to achieve shared goals and maintain high standards of project delivery.



### Growth Mindset

Skilled workers/ talents are given opportunities to flourish in their career through exposure, stretch assignments, mentoring and experience over time.

# Our People

## Diversity and Global Expertise

We combine local talent with international expertise to strengthen project delivery and drive innovation



### Diverse Workforce

We foster an inclusive workplace that values different backgrounds, experiences, and perspectives, creating stronger teams and better solutions for our clients and communities.

### Global Leadership

Our workforce includes experienced foreign leaders and specialists who bring international best practices, technical knowledge, and diverse perspectives

### Strategic Global Partnerships

Through collaborations with leading international firms such as Tokyu Construction Co., Ltd., Tobishima Corporation, Sumitomo Mitsui Construction Construction Co., Ltd., Hyundai Engineering & Construction Co., Ltd., and ong-Ah Geological Engineering Co., Ltd., we facilitate knowledge transfer, strengthen technical capabilities, and elevate construction standards.



### Empowering Megawide Through Standardized HR Processes

The HR Process Review and Cascade was launched to strengthen consistency, collaboration, and excellence across head office departments and project sites by standardizing key HR processes, from workforce planning and talent acquisition to employee development and people management.

By aligning HR practices across groups, the initiative enables more efficient service delivery, stronger support for business objectives, and sustainable growth.



# EConstruction

## Building Better Communities through Construction

Through EConstruction, our partnership initiative with Megawide Foundation, we leverage our engineering and construction expertise to rehabilitate, build, and upgrade community facilities, improving safety, accessibility, and quality of life



**Museo Pambata Restrooms Renovation**  
Roxas Boulevard, Metro Manila



**Construction of 3 DENR-NCR Bird Hides**  
Las Piñas Parañaque Wetland Park



**Tahanan ng Pagmamahal Facility Renovation**  
Pasig, Metro Manila



**White Cross Facility Renovation**  
San Juan, Metro Manila



**Concordia Children's Services Pavement Improvement**  
Quezon City, Metro Manila



**Ronald McDonald House Charities  
Bahay Bullit Learning Center Renovation**  
Bacoor, Cavite

Let's build a First-World Philippines, together.

Stay connected with us through our official channels for the latest updates on our projects, partnerships, and innovations.



MegawideConstruction



@megawideconstruction



Megawide Construction Corporation



[www.megawideconstruction.com.ph](http://www.megawideconstruction.com.ph)

 **MEGAWIDE**  
**CONSTRUCTION**

20 N. Domingo St., Brgy. Valencia, Quezon City, 1112