



COMPANY PROFILE |

The Citicore-Megawide group has a vision of a First-World Philippines.

The vision unites all its businesses, driven by a mission to deliver excellence and innovation through diverse assets throughout the Philippines.

Megawide Construction Corporation

- Large-scale infrastructure projects
- First-world engineering systems
- Niche-market real estate development

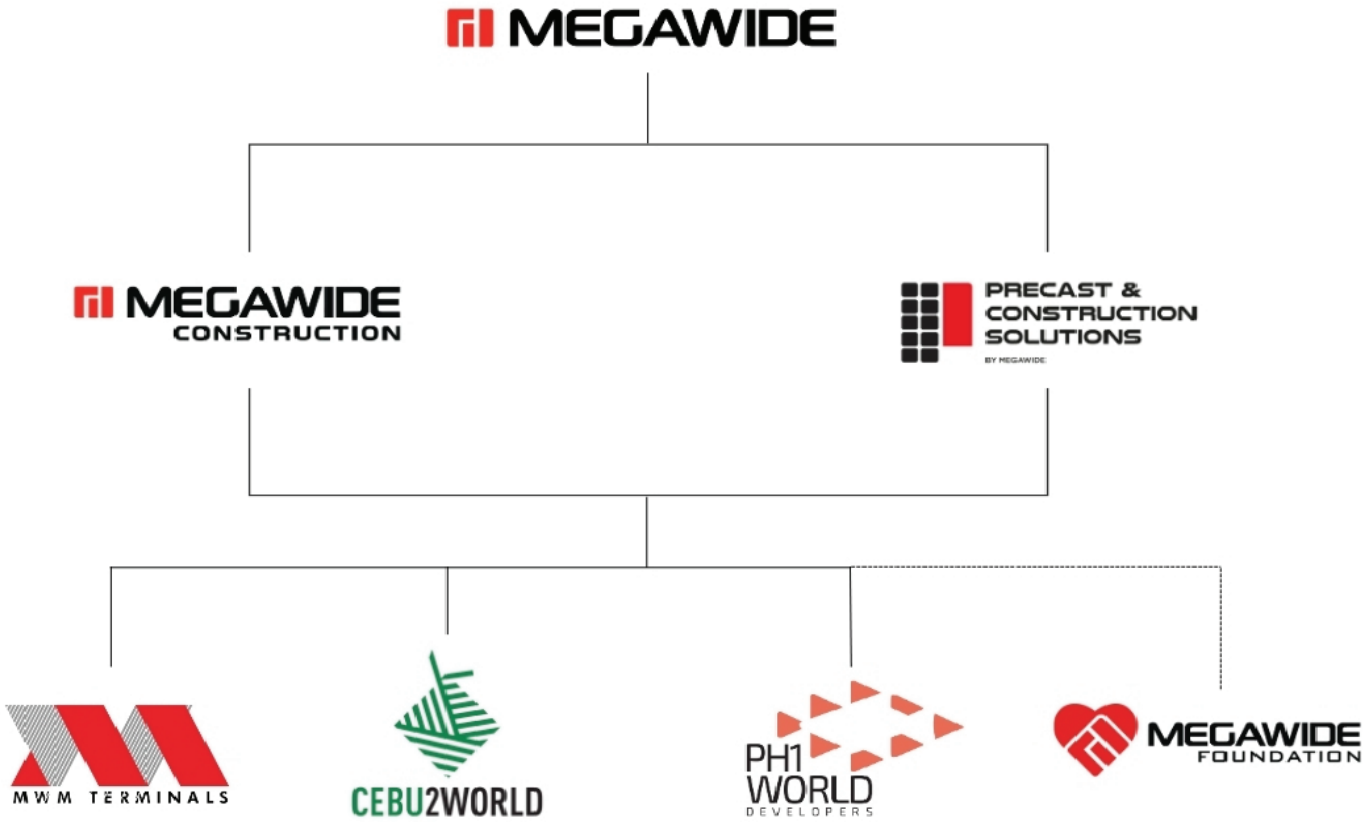
Citicore Power Inc.

- Renewable energy REIT
- End-to-end renewable energy development

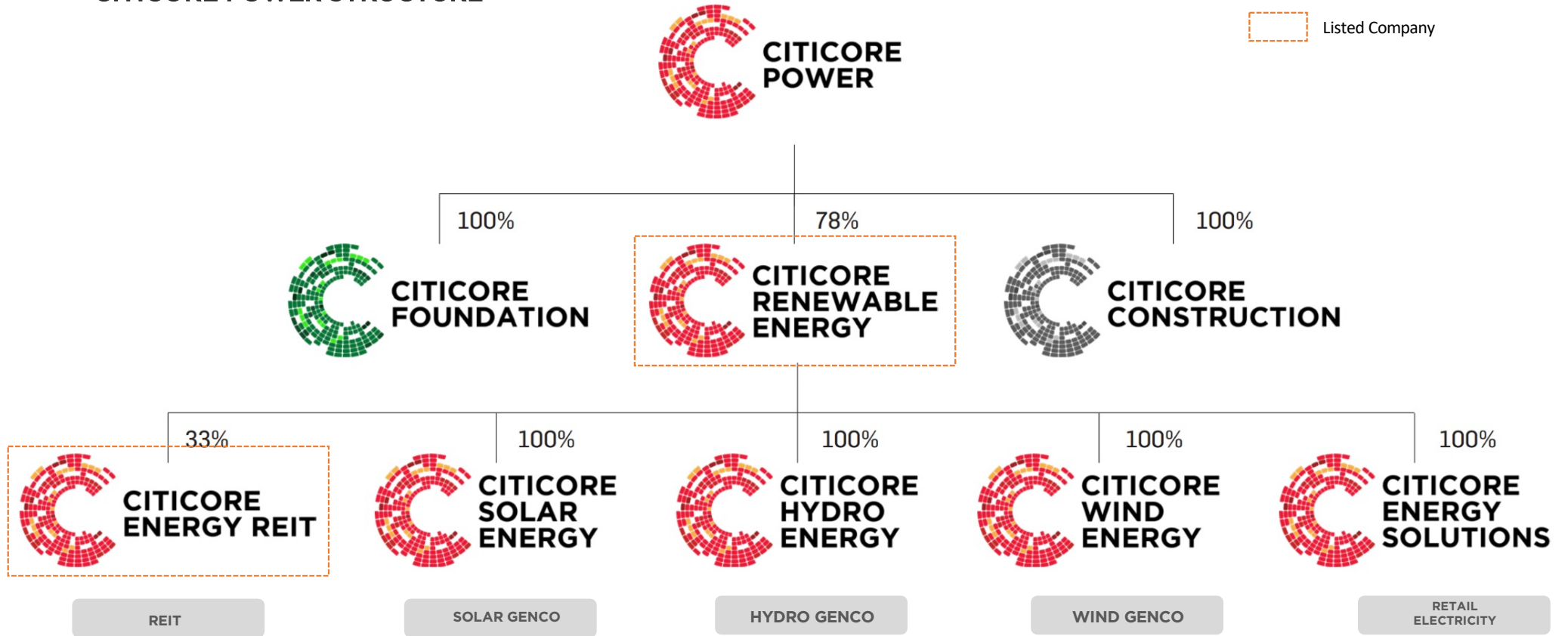
GROUP CORPORATE STRUCTURE



MEGAWIDE CORPORATE STRUCTURE

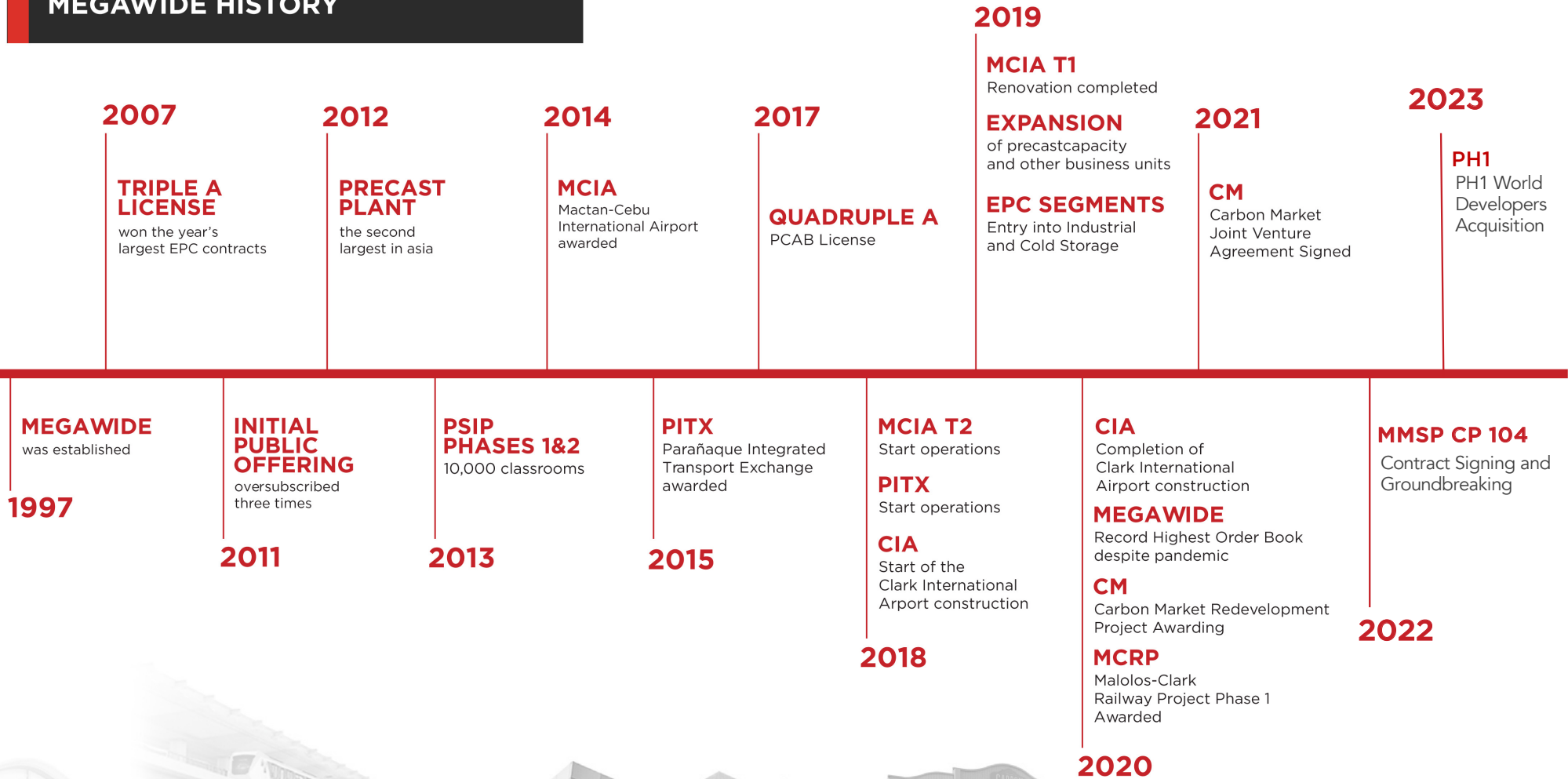


CITICORE POWER STRUCTURE





MEGAWIDE HISTORY



THE MEGAWIDE MANAGEMENT



EDGAR B. SAAVEDRA

**Chairman of the Board of Directors,
Chief Executive Officer and President**

Mr. Saavedra's engineering experience spans over twenty-five (25) years. He received his Bachelor's degree in Engineering from De La Salle University. After obtaining his license as a Civil Engineer, he pursued special studies in Foundation Formworks in Germany through Philippine Institute of Civil Engineers.

He is currently the Chairman and President of Citicore Holdings Investment Inc. He is also the Chairman of MWM Terminals, Inc., Cebu2World Development, Inc., Citicore Power Inc., Citicore Energy REIT Corp, and Citicore Renewable Energy Corporation. He also serves as Director of GMR-Megawide Cebu Airport Corporation and Globemercants Inc. In addition, he serves as the Chairman, Chief Executive Officer, and President of PHI World Developers, Inc. Further, he is a Trustee and Vice President of Megawide Corporate Foundation, Inc.



MANUEL LOUIE FERRER
Vice Chairman and Executive Director
for Infrastructure Development



JEZ DELA CRUZ
Chief Finance Officer



MARIA BELINDA MORALES
Chief Human Resources Officer



ATTY. RAYMUND JAY GOMEZ
Chief Legal, Compliance, and
Data Privacy Officer



ATTY. JAIME RAPHAEL FELICIANO
Chief Business Development Officer



ROLANDO BONDOY
AVP and Head, Investor Relations



FREDERICK TAN
Chief Operating Officer, Megawide Construction



MARKUS HENNIG
EVP, Precast and Construction Solutions



MOHIT MALHI
Chief Operating Officer, MWM Terminals



MA. GILDA ALCANTARA
President, PH1 World Developers, Inc.



LYDWENA ECO
Deputy General Manager, Cebu2World
Development, Inc.

CONSTRUCTION

CONSTRUCTION

Megawide Construction Corporation (MCC) has assets in Construction; Precast and Construction Solutions; and infrastructure development.

Megawide Construction is a Quadruple A contractor in the Philippines. It is one of the country's leading private sector contractors with a unique brand of Value Engineering through end-to-end EPC services.



OFFICE



ARTHALAND CENTURY PACIFIC TOWER

Client:
Arthaland Corporation

Location:
BGC, Taguig City



INTERNATIONAL FINANCE CENTER

Client:
Megaworld Corporation

Location:
BGC, Taguig City



THE CURVE

Client:
IRMO Inc

Location:
BGC, Taguig City

RESIDENTIAL



URBAN DECA MANILA

Client:
8990 Holdings, Inc.

Location:
Tondo, Manila City



GRASS RESIDENCES

Client:
SM Development Corporation

Location:
Quezon City

JAZZ RESIDENCES

Client:
SM Development Corporation

Location:
Makati City





M PLACE

Client:
SM Development Corporation

Location: Quezon City



URBAN DECA CUBAO

Client:
8990 Holdings, Inc

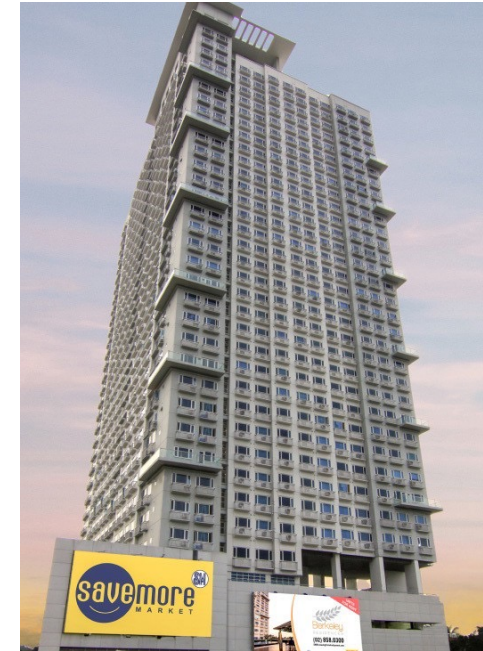
Location:
Quezon City



SEA RESIDENCES

Client:
SM Development Corporation

Location:
Mall of Asia



BERKELEY RESIDENCES

Client:
SM Development Corporation

Location:
Katipunan Ave, Quezon City

ST. MORITZ PRIVATE ESTATE

Client:
Megaworld
Corporation
Location:
Fort Bonifacio, Taguig City



MIXED-USE AND COMMERCIAL



WESTSIDE CITY RESORTS WORLD PHASES A & B

Clients: Travellers International Hotel Group Inc. (Phase A)
Suntrust Home Developers, Inc. (Phase B)

Location: Parañaque City



DD MERIDIAN PARK

Client:
DoubleDragon Properties Corp.

Location:
Pasay city



CITY OF DREAMS MANILA

Client:
Belle Corporation

Location:
Aseana Ave. cor. Macapagal Ave., Parañaque City

INDUSTRIAL AND WAREHOUSE



LANDERS ALABANG | ARCOVIA | BALINTAWAK | OTIS | ASEANA (on-going)

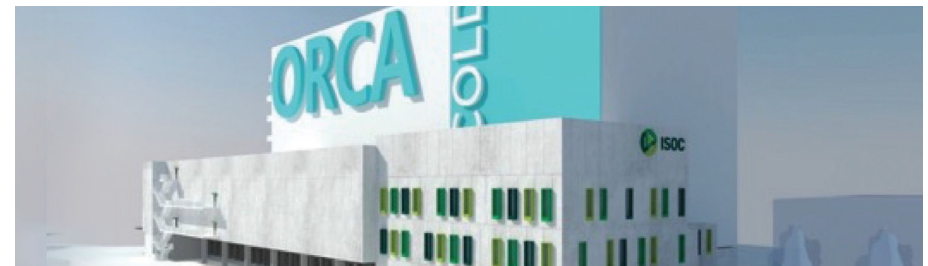
Client: Southeast Asia Retail Incorporated



FOOD COMMISSARY AND DELTA PHASES 1 & 2

Client: Zenith Food Corporation

Location: Taguig City



ISOC COLD STORAGE FACILITY

Client: ISOC Holdings

Location: Canlubang, Laguna

INSTITUTIONAL



PPP FOR SCHOOL INFRASTRUCTURE PROJECT PHASES 1 AND 2

Contractor: Citicore Megawide Consortium, Inc.

Year of Award: Phase 1: 2012

Phase 2: 2013

Scope of Work: Phase 1: Design, construction and financing

Phase 2: Design and construction

AGLIPAY STP

Client: Manila Water Company, Inc. (MWCI)

Location: Brgy. Old Zaniga, Mandaluyong City



INFRASTRUCTURE



CITCORE SOLAR BATANGAS 1

Client:
Megawide Construction Corp.
- Citicore Construction, Inc.

Location: Tuy, Batangas



CITCORE SOLAR PAMPANGA 1

Client: Megawide Construction Corp. - Citicore Construction,
Inc. Location: Arayat, Pampanga



CITCORE SOLAR QUEZON

Client: Megawide Construction Corp. – Citicore Construction, Inc.
Location: Pagbilao, Quezon

INFRASTRUCTURE



METRO MANILA SUBWAY PROJECT (MMSP) CP-104

Contractor: Tokyu Construction, Tobishima Corporation and Megawide Joint Venture

Funding: Japanese International Cooperation Agency (JICA)

Year of Award: 2022

Scope of Work: Construction of two underground stations in Ortigas, with connecting tunnels and a total alignment length of 3.4 km



MALOLOS-CLARK RAILWAY PROJECT (MCRP) Package 1

Contractor: Hyundai Engineering and Construction Co. Ltd., Megawide and Dong-ah Geological Engineering

Company Ltd. Joint Venture

Funding: Asian Development Bank

Year of Award: 2020

Scope of Work: Construction of 17 kilometers of elevated rail viaduct, seven bridges, and two railway stations



MACTAN-CEBU INTERNATIONAL AIRPORT

Developer: GMR MEGAWIDE Cebu Airport Corporation

Year of Award: 2014

Scope of Work: Design, construction, financing and operation of landside facilities for 25 years

CLARK INTERNATIONAL AIRPORT NEW PASSENGER TERMINAL BUILDING

Developer: MEGAWIDE GMR Construction Joint Venture

Year of Award: 2018

Scope of Work: Design and construction of new passenger terminal building





PARAÑAQUE INTEGRATED TERMINAL EXCHANGE

Developer: MWM Terminals Inc., a subsidiary of Megawide

Year of Award: 2015

Scope of Work: Design, construction, financing and operation of the facility for 35 years

CARBON DISTRICT MODERNIZATION

Developer: Joint Venture of Megawide and Cebu City Local Government

Year of Award: 2020

Scope of Work: Design, construction, financing, operations, and maintenance for 50 years

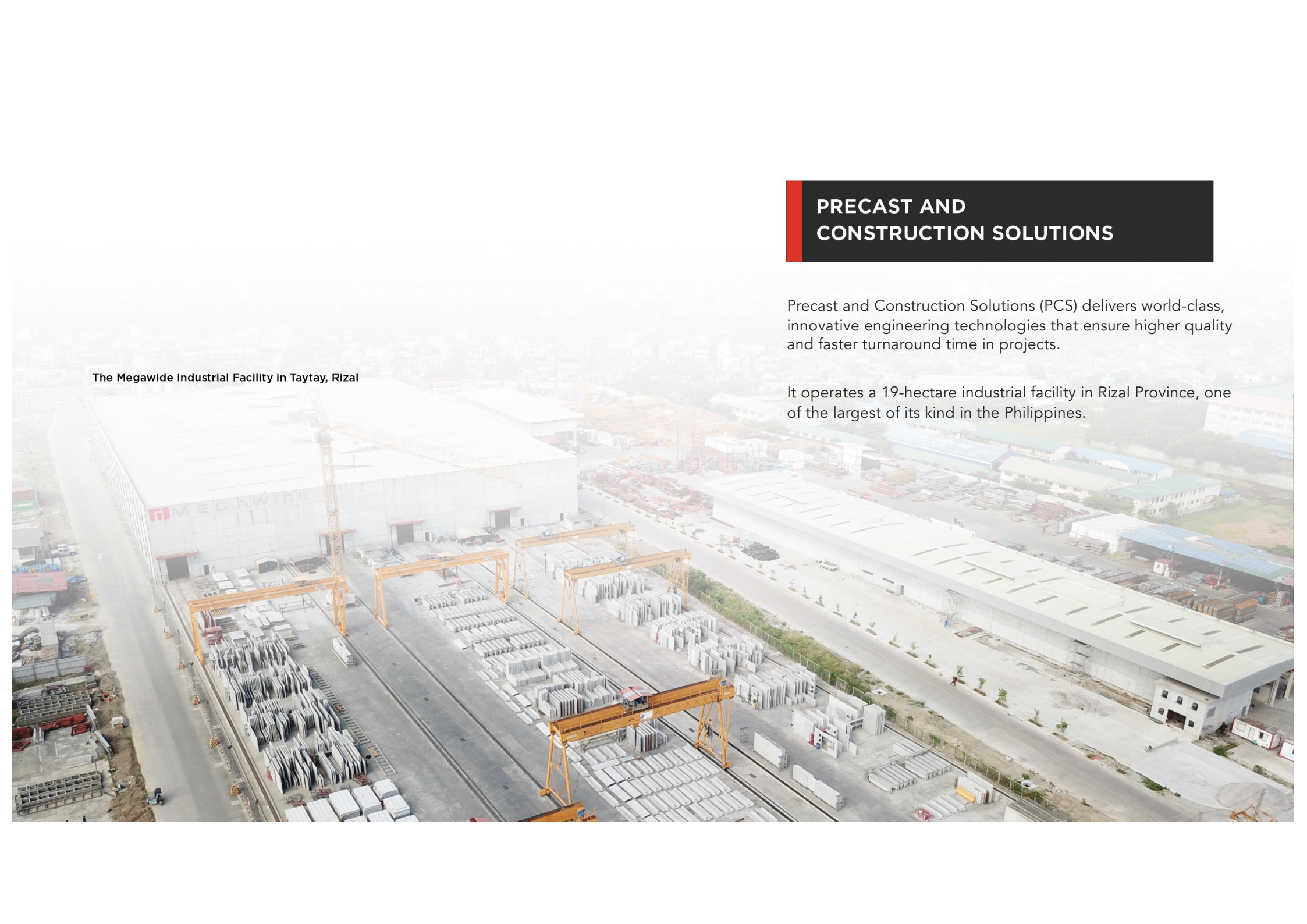


PRECAST AND CONSTRUCTION SOLUTIONS

The Megawide Industrial Facility in Taytay, Rizal

Precast and Construction Solutions (PCS) delivers world-class, innovative engineering technologies that ensure higher quality and faster turnaround time in projects.

It operates a 19-hectare industrial facility in Rizal Province, one of the largest of its kind in the Philippines.



PRECAST

- Largest and most advanced precast facility in the Philippines and one of the largest in Southeast Asia
- Production capacity of about 168,000 cubic meters annually
- Leading precast manufacturer in the country



Project Highlight

PHirst Park Homes

Supply and installation of precast materials in 11 project locations:

- Cavite: Tanza, Naic, General Trias
- Batangas: Lipa, Batulao
- Laguna: San Pablo, Calamba
- Bulacan: Pandi, Baliuag
- Pampanga: Magalang
- Quezon: Tayabas



9,719 units turned over as of December 2022

READY-MIX CONCRETE

- Fully-automated mobile and stationary batching plants
- Higher-quality concrete that meets environment- friendly standards
- Mobile batching plants in key areas to ensure standardization and lessen delays

MultiCON Partnership

Partnered with German concrete specialist MultiCON to develop a new generation of sustainable concrete mixes with improved performances, cost-effectiveness, and environment-friendliness



FORMWORKS AND TEMPORARY FACILITIES

- State-of-the-art climbing and forming technology
- Supplies and installs temporary facilities such as warehouse, offices, and barracks
- Utilizes mature safety concepts that ensure time and cost efficiency, safety, and high-quality delivery





CONSTRUCTION EQUIPMENT, LOGISTICS AND SERVICES

- Extensive fleet of advanced operations and logistics equipment like earthmoving, hauling, and concrete delivery equipment
- Groundworks services for site clearing and demolition, excavation works, land development, and dewatering works

REAL ESTATE



PH1 World Developers, Inc. (PH1WD) is a boutique real estate developer for affordable to mid-market clients in the vertical and horizontal segments.

VERTICAL PROJECT HIGHLIGHTS

"EXTRA SPACE AT NO EXTRA COST"

PH1WD introduced the innovative Add-Loft Technology in select vertical projects, giving customers added loft space without added cost in their units.



MY ENSO LOFTS

Location: Timog Ave., Quezon City

No. of Floors: 45

No. of Units: 1,204 residential units and
21 retail units

MODAN LOFTS

Location: Taytay, Rizal

No. of Towers: 3

No. of Floors: 15 to 20

No. of Units: 20 units per floor





ONE LANCASTER PARK

Location: Lancaster New City, Imus, Cavite

Product: Mid-rise condominium

No. of Towers: 15

No. of Floors: 8-20 floor levels

No. of Units: 10,166 residential units

THE HIVE

Location: Ortigas Ave., Extension Taytay, Rizal

Product: 4 Mid-rise condominium

No. of Floors: 12-16 floor levels

No. of Units: 978 residential units



HORIZONTAL PROJECT HIGHLIGHTS

“ENVIRO-SMART LIVING”

“Enviro-smart living” innovations in PH1WD horizontal projects can translate to energy savings and lesser environment footprints.

San Jose Del Monte

Description: Community living with townhouse and single attached units



RENEWABLE ENERGY

CITICORE POWER INC.

Citicore Power Inc. (CPI), established in 2015, is a pioneer of the Philippine renewable energy (RE) movement and a dedicated RE platform providing comprehensive renewable energy solutions across the country.

It has two listed companies: End-to-end RE developer Citicore Renewable Energy Corporation (CREC) and CREC subsidiary Citicore Energy REIT Corporation (CREIT), the first energy REIT in the Philippines.



CITICORE ENERGY REIT CORPORATION (CREIT) HIGHLIGHTS

14

Leasable Assets
Totaling 7.1 M sq. m



145 MW_{dc}

Tenants' Installed Capacity

184 GWh

Estimated Annual Net Generation



~130k_{MT}

Estimated Annual Carbon Reduction
(based on US EPA AVERT)

7.1M sq.m

Total Leasable Area



CREIT listed on the Philippine Stock Exchange on 2 February 2022

CITICORE RENEWABLE ENERGY CORP (CREC) HIGHLIGHTS

10

Operating Solar Assets



285 MW_{dc}

Combined Gross Installed Capacity

227 MW_{ac} Equivalent

390 GWh

Estimated Annual Net Generation



277k_{MT}

Estimated Annual Carbon Reduction
(based on US EPA AVERT)



Arayat (1&2)

115.7 MW



Bulacan

15 MW



Cebu

60 MW



Tarlac 1

8.8 MW



Negros Occidental

25 MW



Tarlac 2

7.5 MW



Clark

22 MW



Bataan 2

6.5 MW



Bataan 1

18 MW



South Cotabato

6.2 MW

CREC Listed on the Philippine Stock Exchange on 7 June 2024



(L-R) UK FCDO Climate and Economic Counsellor Lloyd Cameron, CREC Chief IR Officer Joan Cosico, CREC Director Louie Ferrer, CREC President and CEO Oliver Tan, CREC Chairman Edgar Saavedra, Securities and Exchange Commission Chairman Emilio Aquino, PSE President Ramon Monzon, PSE Chief Operating Officer & Executive Vice President Roel Refran, PSE Corporate Secretary Atty. Aissa V. Encarnacion, PSE Issuer Regulation Division Head Atty. Marigel M. Baniqued-Garcia, PSE General Counsel Atty. Veronica V. Del Rosario

CITICORE AGROSOLAR INITIATIVE

- Citicore pioneered the use of Agrovoltatics in the Philippines which aims to maximize the use of land by marrying agriculture and power generation
- Augments income of local, small farmers
- Yielded more than 12,700 kg of high value crops like eggplant, napa cabbage, chili and turmeric



MEGAWIDE CORPORATE FOUNDATION

Megawide Corporate Foundation, Inc.

“Engineering First-World communities together”

The Megawide Corporate Foundation, Inc. was established in 2012 to deliver environmental and social programs to marginalized Filipino communities. It aims to empower these communities to achieve the goal of shared prosperity.

Vision:

For marginalized Filipino communities to thrive through sustainable First-World opportunities

PROJECT PILLARS:

Social

- Megawide Engineering Excellence Scholarship
- Livelihood Programs

Environment

- Environmental Conservation
- Waste Management



THANK YOU

