



**Empowering and Engineering  
A First-World Philippines**

## The Megawide Manifesto

Our passion for a First-World Philippines runs red.

Not drawn by duty but by the choice to make our nation our priority –  
sa isip, sa salita, at sa gawa.

We dream of a country built by engineering innovation,  
with infrastructure we proudly call 'Filipino'.

Not copies of what we see, but expressions of our innate spirit:

When the world said we had the worst airport, we gave them its Best Airport,  
Mactan-Cebu International Airport.

In reshaping bus terminals we forged the first landport,  
Parañaque Integrated Terminal Exchange.

When the classroom backlog was overwhelming, we built 10,000 classrooms  
in two years for the Department of Education's School Infrastructure Project.

And when Cebu's 100-year old Carbon market needed a revival,  
we renewed its bare bones for a new lease on life.

This is our passion: the future of the Philippines.  
It is built with our hands, nurtured through time and attention.

It's not just a job. It's our calling.

And it runs red.





Copyright © June 2023 by CHII

All rights reserved. No part of this CHII Company Profile may be produced, transmitted, or stored in an information retrieval system in any form or by any means, graphic, electronic, or mechanical, including photocopying, taping and recording without prior written permission from the publisher.

We are united by one purpose:

To improve the Philippines through infrastructure and engineering,  
renewable energy, and property development.

**Megawide Construction Corporation**

- Large-scale infrastructure projects
- First-world engineering systems

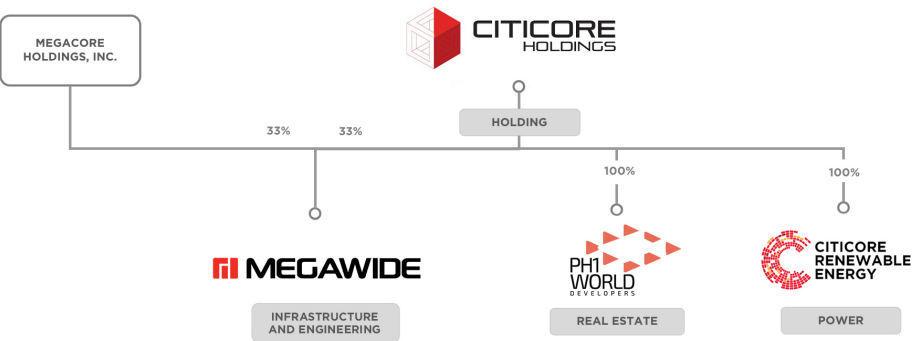
**Citicore Power Inc.**

- Renewable energy generation

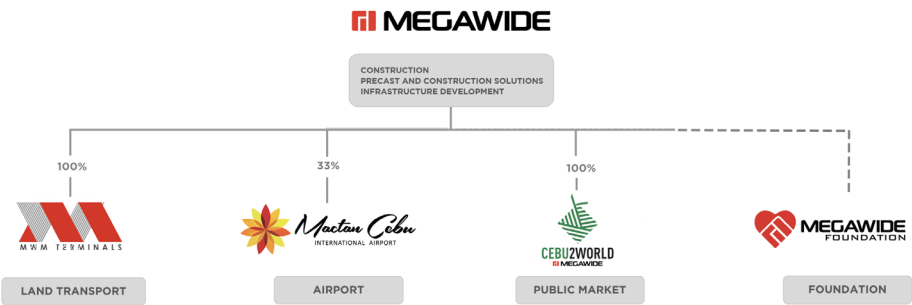
**PH1 World Developers, Inc.**

- Niche-market real estate development

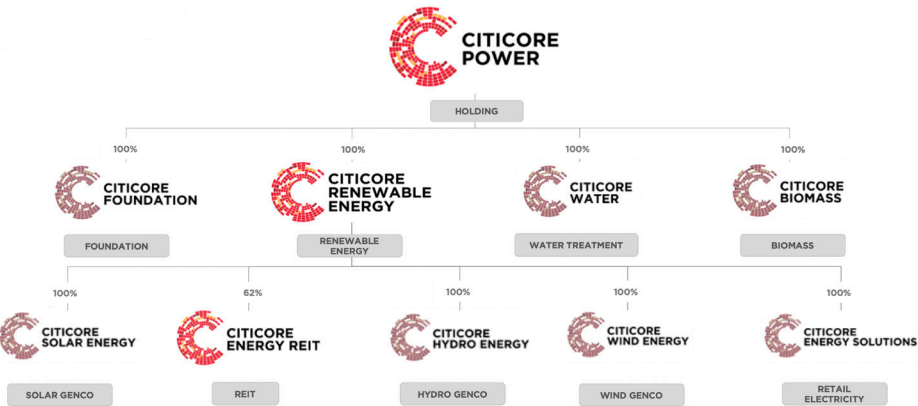
GROUP CORPORATE STRUCTURE



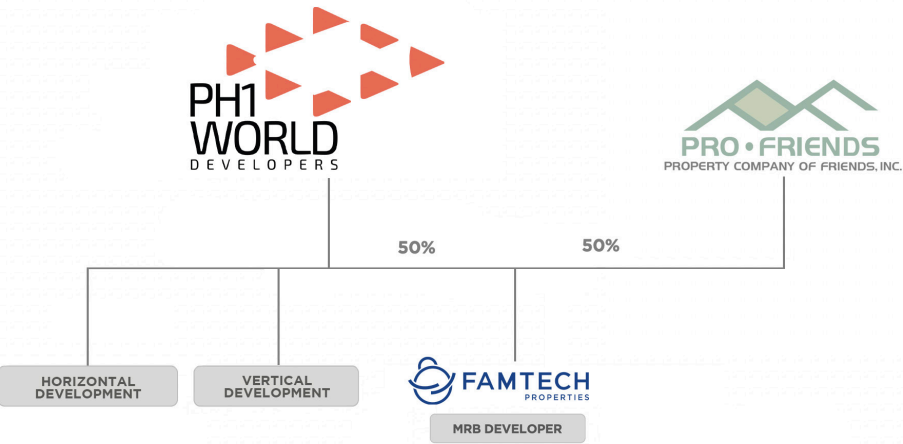
MEGAWIDE CORPORATE STRUCTURE



CITICORE CORPORATE STRUCTURE



PH1 CORPORATE STRUCTURE



**Megawide Construction Corporation (MCC)** is a publicly-listed engineering and infrastructure firm established in 1997. MCC has assets in Construction; Precast and Construction Solutions; and infrastructure development.

## CONSTRUCTION

**Megawide Construction** is a Quadruple A contractor in the Philippines. It is one of the country's leading private sector contractors with a unique brand of Value Engineering through end-to-end EPC services.



RESIDENTIAL



SHANGRI-LA SALCEDO

Client: Shang Properties, Inc.  
GFA: 165,183 sq. m.



THE PROSCENIUM

Client: Rockwell Land Corporation  
GFA: 211,754 sq. m.



**OFFICE**



**WORLD PLAZA**

Client: Daiichi Properties  
GFA: 69,339 sq. m.



**ARTHALAND CENTURY  
PACIFIC TOWER**

Client: Arthaland Corporation  
GFA: 47,008 sq. m.

**MIXED-USE**



**DOUBLEDRAGON PLAZA**

Client: DoubleDragon Properties Corp.  
GFA: 230,130 sq. m.

# HOTEL & CASINO



## WESTSIDE CITY RESORTS WORLD PHASES A & B

Clients: Travellers International Hotel Group Inc. (Phase A)  
Suntrust Home Developers, Inc. (Phase B)  
GFA: 328,628.15 sq. m.



## ASCOTT-DD MERIDIAN PARK

Client: DoubleDragon Properties Corp.  
GFA: 49,365.25 sq. m.

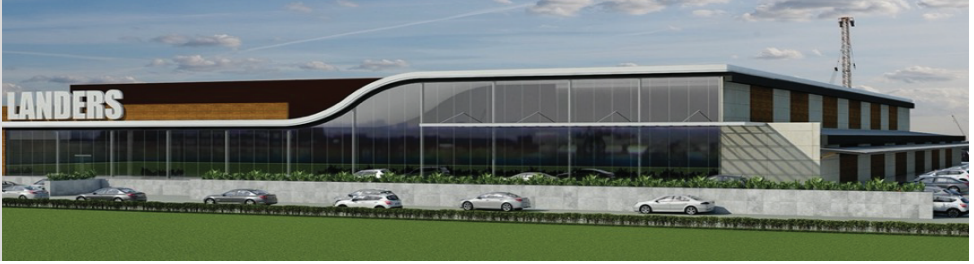


## CITY OF DREAMS MANILA

Client: Belle Corporation  
GFA: 157,440.00 sq. m.



## INDUSTRIAL & WAREHOUSE



LANDERS BALINTAWAK | OTIS | ALABANG | ARCOVIA

Client: Southeast Asia Retail Incorporated



FOOD COMMISSARY AND DELTA PHASES 1 & 2

Client: Zenith Food Corporation

GFA: 24,938 sq. m.



ISOC COLD STORAGE FACILITY

Client: ISOC Holdings

GFA: 6,000 sq. m.

## LOW-COST HOUSING



### URBAN DECA MANILA

Client:  
8990 Holdings, Inc.

GFA:  
410,447 sq. m.

### URBAN DECA ORTIGAS

Client:  
8990 Holdings, Inc.

CFA:  
818,109.81 sq. m.



## SOCIALIZED HOUSING



### NHA CAMARIN MASS HOUSING

Client: National Housing Authority

GFA:  
Phase 1  
37,542 sq. m.

Phase 2 and 3  
38,610 sq. m.



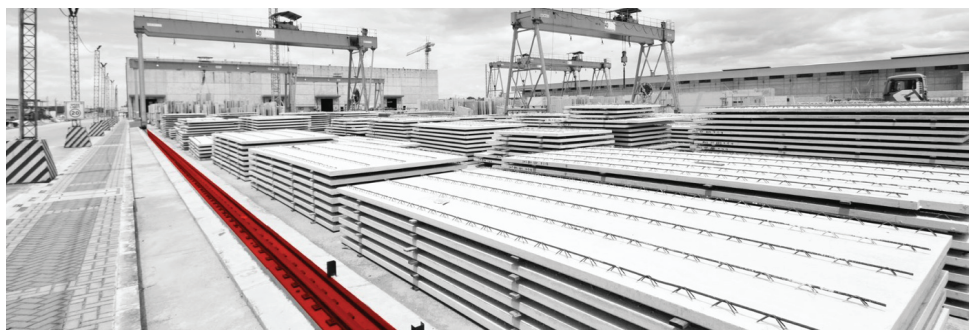
## PRECAST AND CONSTRUCTION SOLUTIONS

**Precast and Construction Solutions (PCS)** delivers world-class, innovative engineering technologies that ensure higher quality and faster turnaround time in projects.

It operates a 19-hectare industrial facility in Rizal Province, one of the largest of its kind in the Philippines.

**The Megawide Industrial Facility in Taytay, Rizal**





## PRECAST

- Largest and most advanced precast facility in the Philippines and one of the largest in Southeast Asia
- Production capacity of about 131,000 cubic meters annually
- Leading precast manufacturer in the country

### Project Highlight

#### Phirst Park Homes

Supply and installation of precast materials in 11 project locations:

- Cavite: Tanza, Naic, General Trias
- Batangas: Lipa, Batulao
- Laguna: San Pablo, Calamba
- Bulacan: Pandi, Baliuag
- Pampanga: Magalang
- Quezon: Tayabas

9,719 units turned over as of December 2022





## READY-MIX CONCRETE

- Fully-automated mobile and stationary batching plants
- Higher-quality concrete that meets environment-friendly standards
- Mobile batching plants in key areas to ensure standardization and lessen delays

### Project Highlight

#### MultiCON Partnership

Partnered with German concrete specialist MultiCON to develop a new generation of sustainable concrete mixes with improved performance, cost-effectiveness, and environment-friendliness



## FORMWORKS AND TEMPORARY FACILITIES

- State-of-the-art climbing and forming technology
- Supplies and installs temporary facilities such as warehouses, offices, and barracks
- Utilizes mature safety concepts that ensure time and cost efficiency, safety, and high-quality delivery



## CONSTRUCTION EQUIPMENT AND GROUNDWORKS SERVICES

- Extensive fleet of advanced operations and logistics equipment like earthmoving, hauling, and concrete delivery equipment
- Groundworks services for site clearing and demolition, excavation works, land development, and dewatering works





## PORTFOLIO HIGHLIGHTS



CP-104 Ortigas Station Perspective



Groundbreaking of CP-104 with President Marcos, Jr., Japanese Ambassador Koshikawa Kazuhiko, PH gov't officials, and the Tokyu-Tobishima-Megawide Joint Venture

## METRO MANILA SUBWAY PROJECT (MMSP) CP-104

MMSP is the first subway project in the Philippines

Contractor: Tokyu Construction, Tobishima Corporation  
and Megawide Joint Venture

Funding: Japanese International Cooperation Agency (JICA)

Year of Award: 2022

Scope of Work: Construction of two underground stations in Ortigas,  
with connecting tunnels and a total alignment length of 3.4 km





MCRP Calumpit Station Perspective



MCRP Apalit Station Perspective

## MALOLOS-CLARK RAILWAY PROJECT (MCRP) Package 1

MCRP will link the provinces of Bulacan and Pampanga

Contractor: Hyundai Engineering and Construction Co. Ltd.,  
Megawide and Dong-ah Geological Engineering  
Company Ltd. Joint Venture

Funding: Asian Development Bank

Year of Award: 2020

Scope of Work: Construction of 17 kilometers of elevated rail viaduct,  
seven bridges, and two railway stations



## MACTAN-CEBU INTERNATIONAL AIRPORT

The country's second-busiest gateway and award-winning international airport in Cebu, Philippines

Developer: GMR MEGAWIDE Cebu Airport Corporation

Year of Award: 2014

Scope of Work: Design, construction, financing and operation of landside facilities for 25 years

### Award Highlights:



CAPA Centre for Aviation 2018  
Best Regional Airport in Southeast Asia



World Architecture Festival 2019 – Winner,  
Completed Buildings Transport Category



## **CLARK INTERNATIONAL AIRPORT NEW PASSENGER TERMINAL BUILDING**

Increased airport passenger capacity from 4.2 million to 12.2 million with construction of the new terminal

Developer: MEGAWIDE GMR Construction Joint Venture

Year of Award: 2018

Scope of Work: Design and construction of new passenger terminal building





PITX Terminal Exterior



PITX Automated Boarding Pass  
Scanners and Gate

## PARAÑAQUE INTEGRATED TERMINAL EXCHANGE

The Philippines’ First Integrated Land Terminal or “Landport” with more than 100,000 passengers daily

Developer: MWM Terminals Inc., a subsidiary of Megawide

Year of Award: 2015

Scope of Work: Design, construction, financing and operation of the facility for 35 years



Carbon Market Building Perspective



Site Development Plan

## **CARBON DISTRICT MODERNIZATION**

Rehabilitation of the 100-year old Carbon District in Cebu City, Cebu, including infrastructure modernization

Developer: Joint Venture of Megawide and Cebu City Local Government

Year of Award: 2020

Scope of Work: Design, construction, financing, operations, and maintenance for 50 years



2x10 Type Classroom



1x2 Type Classroom

## PPP FOR SCHOOL INFRASTRUCTURE PROJECT PHASES 1 AND 2

Built close to 10,000 classrooms in 27 provinces to help solve the nationwide classroom shortage

Contractor: Citicore Megawide Consortium, Inc.

Year of Award: Phase 1: 2012  
Phase 2: 2013

Scope of Work: Phase 1: Design, construction and financing  
Phase 2: Design and construction

**RENEWABLE  
ENERGY**



**Citicore Power Inc. (CPI)** is a pioneer of the Philippine renewable energy movement providing green energy solutions through solar farms and micro-grid solar rooftops across the country.

CPI has more than 240MW in gross installed capacity and a 5GW capacity target in five years.

Subsidiary **Citicore Renewable Energy Corp. (CREC)** is a pure renewable energy developer and operator of solar, run-of-river hydro, and off-shore wind energy platforms.







## **CREIT**

The first and only renewable energy REIT listed at the Philippine Stock Exchange that empowers public investors to participate in the shift to green energy.

## **BUSINESS HIGHLIGHTS**

### **Power Generation:**

241 Megawatts (February 2023)

### **Strategic Plants:**

9 solar power plants

1 micro grid solar rooftop project

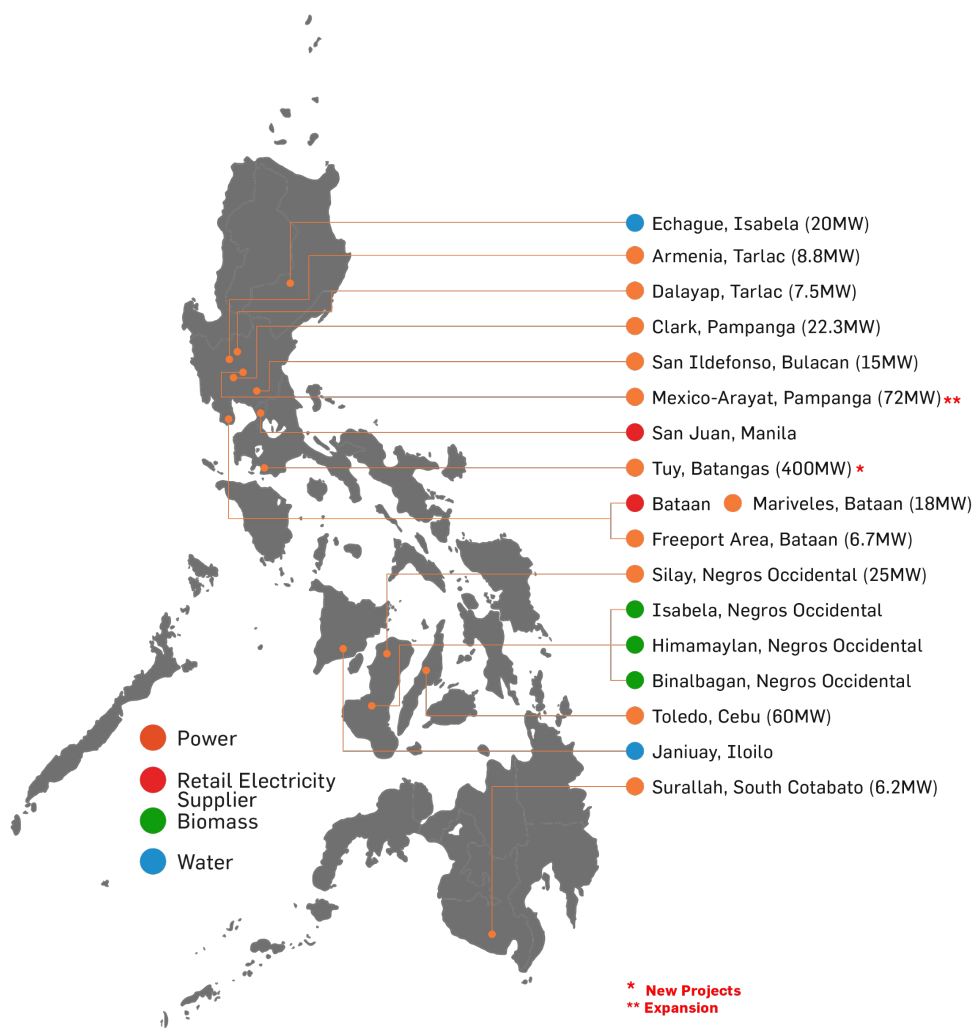
### **Reduced Carbon Emissions:**

348,544 metric tons annually; 10 million metric tons for entire life of all solar power plants

### **Pipeline Projects:**

CREC has 5GW of project pipelines in varying stages of development in the next five years

# SOLAR ENERGY ASSETS



SITE MAP



CS BATAAN 18MW



CS BULACAN 15MW



CS CEBU 60MW



CREIT 22MW



CS TARLAC 2 7MW



ARAYAT-MEXICO  
72MW



CS NEGROS OCCIDENTAL  
25MW



CS SOUTH COTABATO  
6MW



CS TARLAC 1 8MW



AFAB 6.6MW

## PLANTS AND LOCATIONS

## AGRO-SOLAR FARMING TECHNOLOGY



The pioneering AgroSolar concept in the country is made possible through CPI's Agrovoltaic Technology.

It enables solar power generation to coexist with agricultural crop production so that host communities are not displaced by renewable energy.

**REAL ESTATE**

**PH1 World Developers, Inc. (PH1)**

is a boutique real estate developer for affordable to mid-market clients in the vertical and horizontal segments.





## VERTICAL PROJECT HIGHLIGHTS

### “EXTRA SPACE AT NO EXTRA COST”

PH1 introduced the innovative Add-Loft Technology in select vertical projects, giving customers added loft space without added cost in their units.

#### Project Highlight

##### MyEnso Lofts

Location: Timog Ave.,  
Quezon City

No. of Floors: 45

No. of Units: 1,204 residential units  
and 21 retail units



##### Modan Lofts

Location: Taytay, Rizal

No. of Towers: 3

No. of Floors: 15 to 20

No. of Units: 20 units per floor

### “ENVIRO-SMART LIVING”

“Enviro-smart living” innovations in PH1 horizontal projects can translate to energy savings and lesser environmental footprints.

#### Project Highlight

#### San Jose Del Monte

Description: Community living with townhouse and single attached units



## **Megawide Corporate Foundation, Inc.**

**“Engineering First-World communities together”**

The Megawide Corporate Foundation, Inc. was established in 2012 to deliver environmental and social programs to marginalized Filipino communities. It aims to empower these communities to achieve the goal of shared prosperity.

### **VISION:**

For marginalized Filipino communities to thrive through sustainable First-World opportunities

### **PROJECT PILLARS:**

#### **Social**

- Megawide Engineering Excellence Scholarship
- Livelihood Programs

#### **Environment**

- Environmental Conservation
- Waste Management





